



Thank You Report
December 2024

Strong Schools Community Collaborative



Empowering Communities Through Schools

www.strongschools.co.za



THANK YOU to all our supporters - you are impacting many lives!
Enjoy just a few of the highlights of this year



Artjamming for Youth leaders of Sir Lowry's Pass Primary School



Nomzamo High School's Counselling Room was launched



<https://www.news24.com/news24/community-newspaper/districtmail-helderberggazette/community-collaboration-brings-vital-student-support-to-nomzamo-20241106>

Our Purpose

Empowering Schools in disadvantaged communities to be effective, **STRONG SCHOOLS**

so that

learners can become whole, independent and productive citizens.

Our Strategy

- **Partner with School leadership and stakeholders** to form **School Support and Well-being Hubs**
- Facilitate **practical and effective solutions** through our **5 step Change Journey**
- **Collaborate with like-minded and trusted people and organisations** to multiply social impact by means of **quality education**
- **Support sustainable interventions** in the schools



LEAD THE CHANGE FROM ROOTS TO FRUITS

Our Redemptive Purpose: Whole Schools and Communities - in mind, body, soul and spirit



School Well-being Hubs

We established 5 functioning Well-being Hubs in the past year. This is the vehicle through which we support programs and projects in our Schools, enhancing well-being of the mind, body, soul and spirit:

- Life Skills for Educators, Learners and Parents
- Youth at Risk Programmes
- Leadership skills for Youth Leaders
- Teacher's Appreciation activities
- School Assemblies and devotions.
- Counselling sessions
- Small Life Groups



LEAD THE CHANGE FROM ROOTS TO FRUITS



Well-being Hubs Overview



Head of Operations

Well-being Strategic Leader

Facilitators in Schools

An initiative to come alongside schools and join our hearts and hands to develop healthy communities and cities.

- Principals & Teachers
- Learners and Parents
- SGB Members
- Non-Teaching Staff



Spiritual

- Assemblies
- Teacher appreciations
- Inspirational workshops
- Leadership empowerment
- Life Groups



Psychological

- Emotional well-being
- Counselling: Teachers
- Counselling: Learners & Parents
- Trauma counselling
- Executive coaching for Principals
- Upskilling of Educators



Life Skills

- Personal Development
- Identity & Purpose
 - Positive choices
 - Learner Leadership
 - Learning styles/methods
 - Youth at Risk topics
 - BrightStar Lifestyle Workshops
 - Legacy Dad programs



Physical

- Therapeutic Music workshops
- Body Movement workshops
- Personal Care
- Art workshops

Launching of the Nomzamo High School Counselling Room



Counselling Support for Learners & Educators

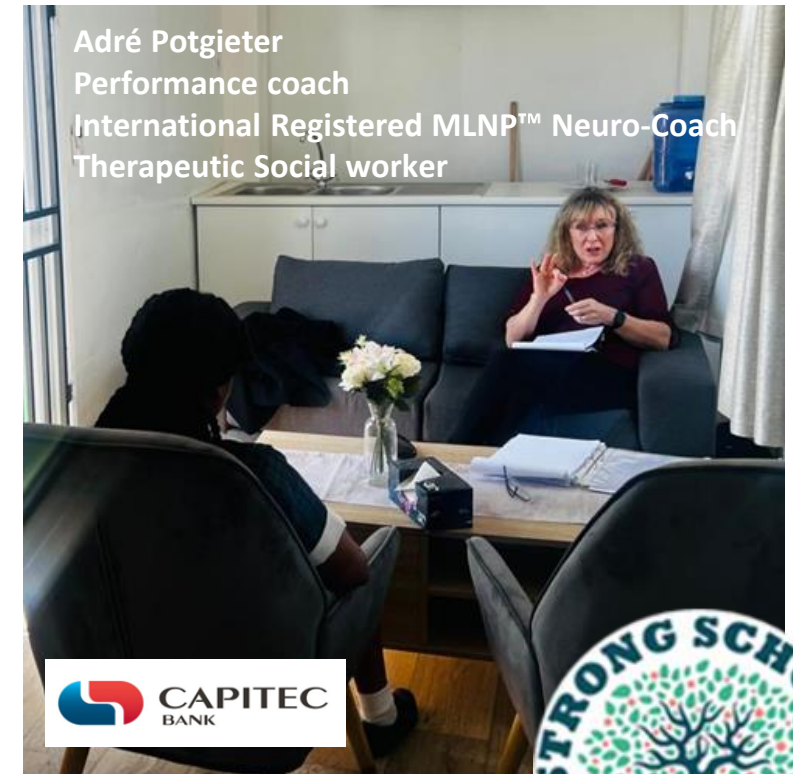
- Through a Counselling Fund this year, we could support 10 learners and teachers who indicated that they need support in 5 of our schools. Executive coaching was also provided to our Principals.
- André Venter assisted SSCC in sourcing and evaluating psychologists and therapists for our Learners and Teachers who needed urgent psycho-social support.
- Capitec funded the Nomzamo High School Counselling Room and Sickbay.



André Venter
Organisational Psychologist



Abeedah-Hendricks-Lalla
Clinical Psychologist



LEAD THE CHANGE FROM ROOTS TO FRUITS



Installation of Data Projectors and White Boards in 5 of our schools

NASHUA 



Thank you to the generous support of Capitec and Nashua Winelands, five of our schools received between 6 and 8 projectors. Nashua also did the installation and onsite training.

This donation is not just about equipment – it is about unlocking potential, empowering teachers, and giving students the tools they need to reach higher. Another successful collaboration story!



Learners of the new Christmas Tinto Library flourish. They received over R60000 worth of books from an AVBOB donation.



Leadership Development, Life Skills, Well-being programmes, Empowerment

- Training of Learners on Life skills – Grade 6 to 9 learners
- Various Youth at risk Life skills programmes - Grade 5 to 12 Learners
 - including Stop Trafficking & Anti-Gangsterism sessions
- Youth Leaders (Prefects and Monitors) - Youth leadership development life skills programmes
- Forming of small Life Groups around the Nomzamo schools, supported by Youth workers from Every Nation Church
- 10 Educators per School - BrightStar CORE Life Skills Programme
- Counselling support for 10 Learners from 5 Schools
- Coordination of Well-being Hub activities and spiritual and emotional support for the Principals, Educators and Learners
- Three School Support Hub sessions for our Principals
- Empowering 50 Dads with the Legacy Dad Life skills program
- Trauma workshops for Parents
- Change management sessions conducted with the Principals and Senior Management Teams
- Our online Compass calibration Tool was implemented in all our schools. Automated Feedback Reports were generated, analyzed and used as strategic implementing tools
- Training of Xhosa-speaking Life Skills facilitators



LEAD THE CHANGE FROM ROOTS TO FRUITS

Impacting Learners of Dr. G.J. Joubert Primary and Simondium Primary Schools



Youth Leaders Investment with leaders of Dr GJ Joubert Primary School.



Stop Trafficking session with learners from Simondium Primary School



LEAD THE CHANGE FROM ROOTS TO FRUITS

Impacting Teachers of the Helderberg Basin

BrightStar Core with Dr. G.J. Joubert Educators - by Jannett Skinner



Zelda Coetzee motivating 300 teachers at a Teachers appreciation event



LEAD THE CHANGE FROM ROOTS TO FRUITS

Strong Schools Beneficiaries: 2024 - 2025

4	Schools supported by SSCC interventions in the Helderberg Basin
	Nomzamo High School Christmas Tinto Primary School Dr GJ Joubert Primary School Sir Lowry's Pass Primary School
1	School supported by SSCC interventions in Simondium Simondium Primary School
6048	Learners enrolled in our schools benefit from SSCC interventions
202	Educators impacted by SSCC interventions
61	Parents impacted by SSCC interventions – Trauma workshops, Legacy Dad, Life Skills
5	Communities around our schools benefit from SSCC interventions
1	New School added in the Helderberg Basin Hope and Light School
2	New Schools added in Paarl area: Joostenberg Primary School Bergendal Primary School
5	New Schools in Wellington – pilot scaling program with COA



LEAD THE CHANGE FROM ROOTS TO FRUITS

Support Hub Schools & Principals who benefitted from your funding in 2024



Charlton De Morney,
Sir Lowry's Pass
Primary School



Tauhira Fanie,
Dr GJ Joubert
Primary School



Chris Mgubanto,
Nomzamo
High School



Steven Quantolo,
Christmas Tinto
Primary School



Liza Mathee
Simondium
Primary School



LEAD THE CHANGE FROM ROOTS TO FRUITS

New School Support Hubs – SSCC scaling models

Our Change Journey with schools has extended - we now have 5 School Support Hubs in the Helderberg Basin and 3 School Support Hubs in the Paarl area. We are partnering with Communities of Abundance and piloted a second scaling model for 5 schools in the Wellington area, who started implementing the SSCC Change Journey in their schools during the past 3 months.



Ms Florina Julies
BergenDal
Primary School



Mr Cuan Bergstedt
Joostenberg
Primary School



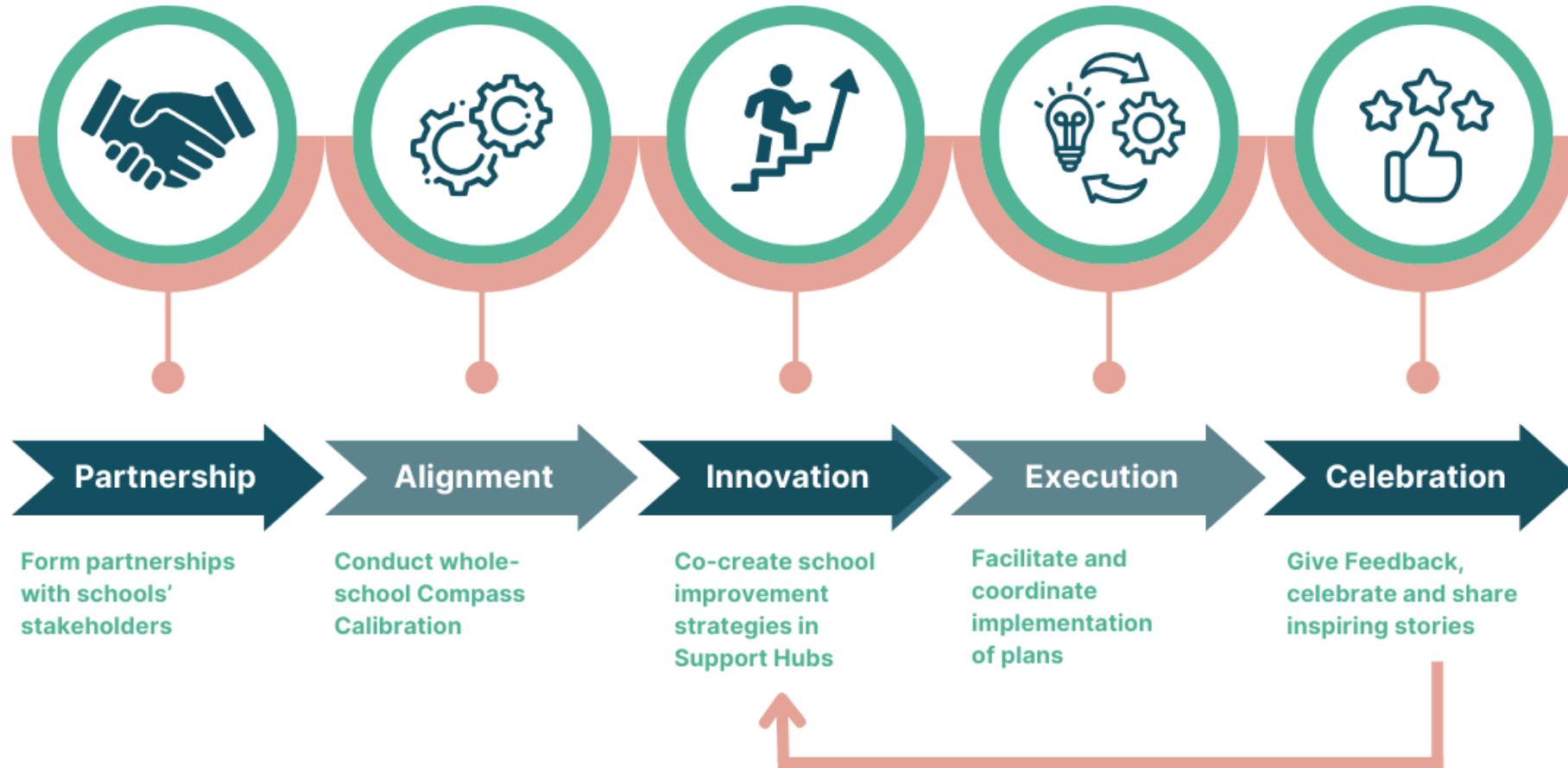
Mr Blackie Swart
Hope and Light
Primary & High School



LEAD THE CHANGE FROM ROOTS TO FRUITS

Our Change Journey with each School

The streamlined 5-step process ensures effective results



LEAD THE CHANGE FROM ROOTS TO FRUITS

Impacting Principals of the Helderberg Basin and Paarl



Principal Mr Chris Mgbanto
- Nomzamo High School



Principal Mr Cuan Bergstedt
- Joostenberg Primary School



Principal Mrs Tauhira Fanie
- Dr. G.J. Joubert Primary School



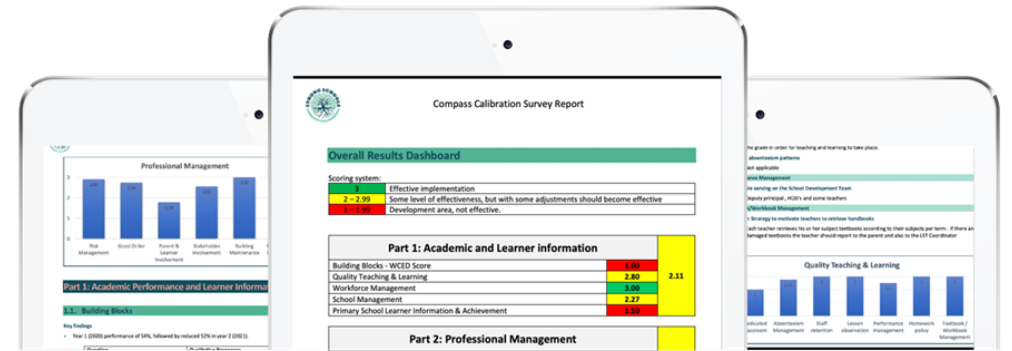
LEAD THE CHANGE FROM ROOTS TO FRUITS

SSCC Compass Calibration – Whole school Audit tool

Our on-line Compass Calibration Tool – a Survey and fully automated reports for our Schools, with qualitative and quantitative measurements – was implemented in all our Support Hub Schools and beyond.

- The objective: An instrument which measures the basic functionality of our schools and identifies gaps
- Our Schools receive a full report with a feedback session after the completion of their survey
- This is used as a strategic tool towards necessary interventions and planning towards reaching goals
- It is also available to other Schools, and serve as a source of Income for Strong Schools
- Our developer maintains the system monthly and make changes as we receive feedback and decide on upgrading.

<https://www.compasscalibration.co.za/home/>



TOGETHER WE ARE STRONGER

Calculator drive for Nomzamo High School

Two years ago, only 200 of the Nomzamo High School Learners had their own calculators to use for Mathematics, Science and Bookkeeping.

Thanks to Capitec, the Mergon Foundation, Sharp, MD Technologies and individual donors, all learners in the school now have their own calculators! SSCC could bless them with over 800 calculators!



TOGETHER WE ARE STRONGER



Learners of Dr GJ Joubert Primary School enjoy the Capitec Volunteers



ACCEPT OUR DEEPEST GRATITUDE

We dearly value you all as stakeholders and donors of Strong Schools and the schools that we support. Only through trusted partnerships and collaborative efforts with like-minded people and organisations, can we support the disadvantaged schools that we serve.

We look forward to continue our partnerships and your support in whichever way, which will enable us to help transform schools into beacons of hope in their communities.

God bless and keep you

The SSCC Board & Team



“It is not beyond our power to create a world in which all children have access to a good education. Those who do not believe this have small imaginations.” - Nelson Mandela

STRONG SCHOOLS STRONG COMMUNITIES.....STRONG COUNTRY